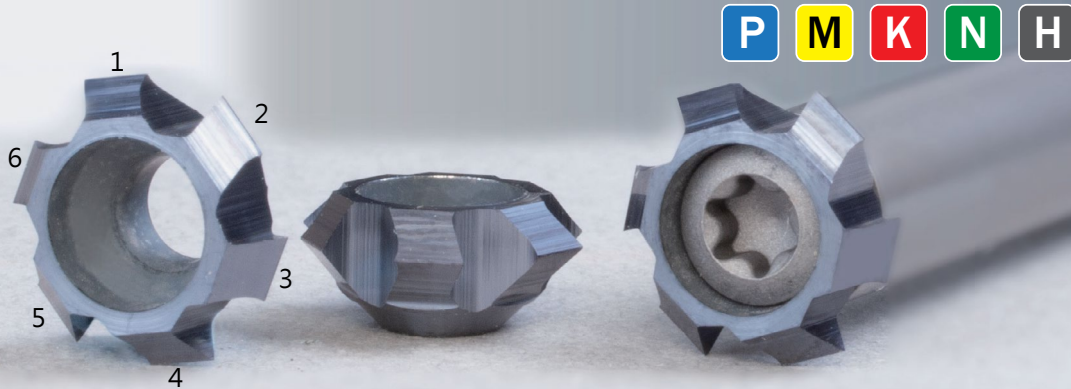


# MCC Mill

60° | 90°

For both front and back deburring and threading applications



- 6 cutting flutes, Higher feed rate & reduced cycle time
- Minimum deburring bore from Ø3.9mm to Ø10mm

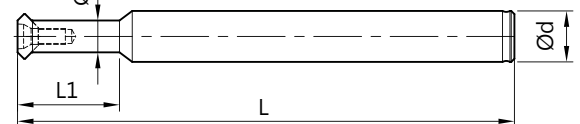
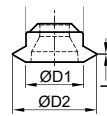
PROMO

## Single Set

Included:  
Holder x 1 + insert x 1 + screw x 1  
+ key x 1

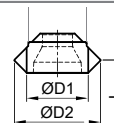
**Special Price**

- ▶ **60° Single Set** • For front and back deburring.  
• Also for threading application.



Parts No.	Inserts Included				Holders Included					Plunge 0.1C		SALE Price
	Type	ØD1	ØD2	L	Shank	Ød	Ød1	L1	L	min. hole	max. hole	
00-99626-R106-2103	R06005-05010-32	3.9	5.0	0.35	00-99626-CR05-06-051	6	3.5	16	51	4.2	4.8	\$141.00
00-99626-R306-2301	R06007-06810-32	5.5	6.8	0.40	00-99626-CR07-06-057	6	5.0	22	57	5.6	6.6	\$143.00
00-99626-R606-2601	R06010-08510-32	6.9	8.5	0.49	00-99626-CR10-08-069	8	6.8	27	69	7.2	8.3	\$145.00

- ▶ **90° Single Set** • Front & back deburring in one operation.

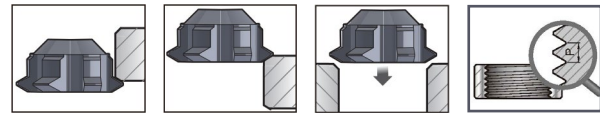
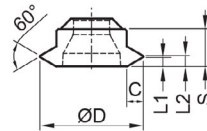


Parts No.	Inserts Included				Holders Included					Plunge 0.1C		SALE Price
	Parts No.	ØD1	ØD2	L	Shank	Ød	Ød1	L1	L	min. hole	max. hole	
00-99626-R106-4101	R09005-05060-32	3.9	5.0	0.60	00-99626-CR05-06-051	6	3.5	16	51	4.2	4.8	\$141.00
00-99626-R306-4301	R09007-07020-32	5.1	7.0	1.00	00-99626-CR07-06-057	6	5.0	22	57	5.6	6.8	\$143.00
00-99626-R606-4601	R09010-10010-32	7.2	10.0	1.45	00-99626-CR10-08-069	8	6.8	27	69	7.6	9.8	\$145.00

## 60° Deburring Mill Inserts

- For front and back deburring.
- Also for threading application.

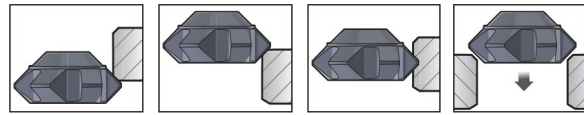
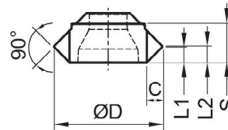
NC2032: Steel  
XP9000: Non-Ferrous



Holder Size	Code	Parts No.	Coating	Grade	ØD ±0.025	L1	L2	S ±0.025	C	Plunge 0.1C		Pitch Range		PRICE
										min.hole	max.hole	mm	TPI	
CR05	01R2101	R06005-05006-32	TiAlN	K20F	5.0	0.35	0.45	2.0	0.40	4.2	4.8	0.6-0.75	32-28	\$36.27
	01R2102	R06005-05006-00	Uncoated											\$36.27
	01R2103	R06005-05010-32	TiAlN											\$36.27
	01R2104	R06005-05010-00	Uncoated											\$36.27
CR07	01R2301	R06007-06810-32	TiAlN		6.8	0.40	0.50	2.35	0.50	5.6	6.6	0.8-1.25	28-20	\$39.23
	01R2302	R06007-06810-00	Uncoated											\$39.23
CR10	01R2601	R06010-08510-32	TiAlN		8.5	0.49	0.59	3.60	0.65	7.2	8.3	1.0-1.5	24-18	\$42.19
	01R2602	R06010-08510-00	Uncoated											\$42.19
	01R2603	R06010-10010-32	TiAlN											\$42.19
	01R2604	R06010-10010-00	Uncoated											\$42.19

## 90° Deburring Mill Inserts

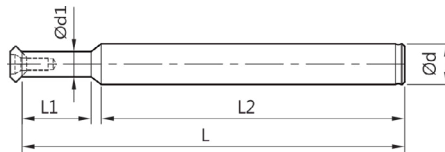
- Front & back deburring in one operation.



Holder Size	Code	Parts No.	Coating	Grade	ØD ±0.025	L1	L2	S ±0.025	C	Plunge 0.1C		PRICE
										min.hole	max.hole	
CR05	01R4101	R09005-05060-32	TiAlN	K20F	5.0	0.60	1.20	2.00	0.4	4.2	4.8	\$36.27
	01R4102	R09005-05060-00	Uncoated									\$36.27
CR07	01R4301	R09007-07020-32	TiAlN		7.0	1.00	1.20	2.35	0.7	5.6	6.8	\$39.23
	01R4302	R09007-07020-00	Uncoated									\$39.23
CR10	01R4601	R09010-10010-32	TiAlN		10.0	1.45	1.55	3.60	1.2	7.6	9.8	\$42.19
	01R4602	R09010-10010-00	Uncoated									\$42.19

## HOLDERS

- Made of hardened high alloy steel.
- **NEW** - extended length carbide holders.
- For both 60° and 90° deburring inserts.



Holder Size	Code	Parts No.	Type	Shank	Ød	Ød1	L1	L2	L	Screw/Key	PRICE
CR05	70R104	00-99626-CR05-06-039	BC06-CR05-039	Steel	6	3.5	4	33	39	Better with <b>SLIKY</b> *NS-20045 0.6Nm/NK-T6	\$120.66
	70R105	00-99626-CR05-06-045	BC06-CR05-045								\$120.66
	70R103	00-99626-CR05-08-076	BC08-CR05-076								\$120.66
	70R101	00-99626-CR05-05-043	BC05-CR05-043								\$120.66
	70R106	00-99626-CR05-06-051	BC06-CR05-051								\$120.66
	<b>NEW</b> 70R107	00-99626-CR05-06-051W	BC06-CR05-051W								Carbide
	CR07	70R304	00-99626-CR07-06-041	BC06-CR07-041	Steel	6	5.0	6	33		41
70R303		00-99626-CR07-08-078	BC08-CR07-078	\$120.66							
70R305		00-99626-CR07-06-049	BC06-CR07-049	\$120.66							
70R301		00-99626-CR07-06-052	BC06-CR07-052	\$120.66							
70R306		00-99626-CR07-06-057	BC06-CR07-057	\$120.66							
<b>NEW</b> 70R307		00-99626-CR07-06-057W	BC06-CR07-057W	Carbide						\$287.22	
CR10		70R604	00-99626-CR10-08-049	BC08-CR10-049	Steel	8	6.8	7	40	49	NS-35080 2.5Nm/NK-T15
	70R603	00-99626-CR10-08-082	BC08-CR10-082	\$120.66							
	70R605	00-99626-CR10-08-059	BC08-CR10-059	\$120.66							
	70R606	00-99626-CR10-08-069	BC08-CR10-069	\$120.66							
	<b>NEW</b> 70R607	00-99626-CR10-08-084W	BC08-CR10-084W	Carbide							

\*Torque screwdriver is recommended.

**Distributed by**



SCAN QR Code  
To  
Watch Application!

